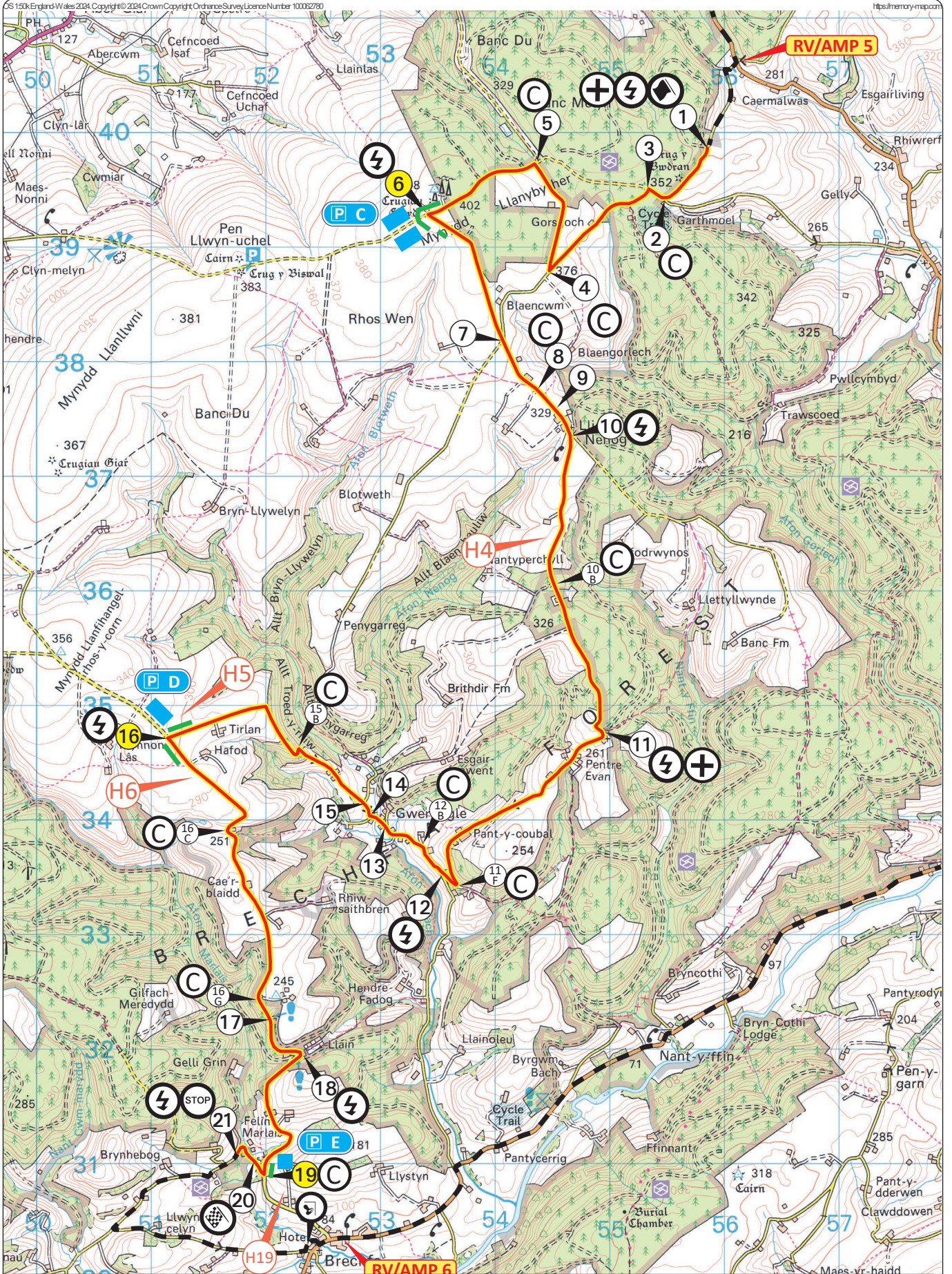






**SS 3 & 6 Brechfa 20.07 Km - Version 8 (06-Aug-2024)**

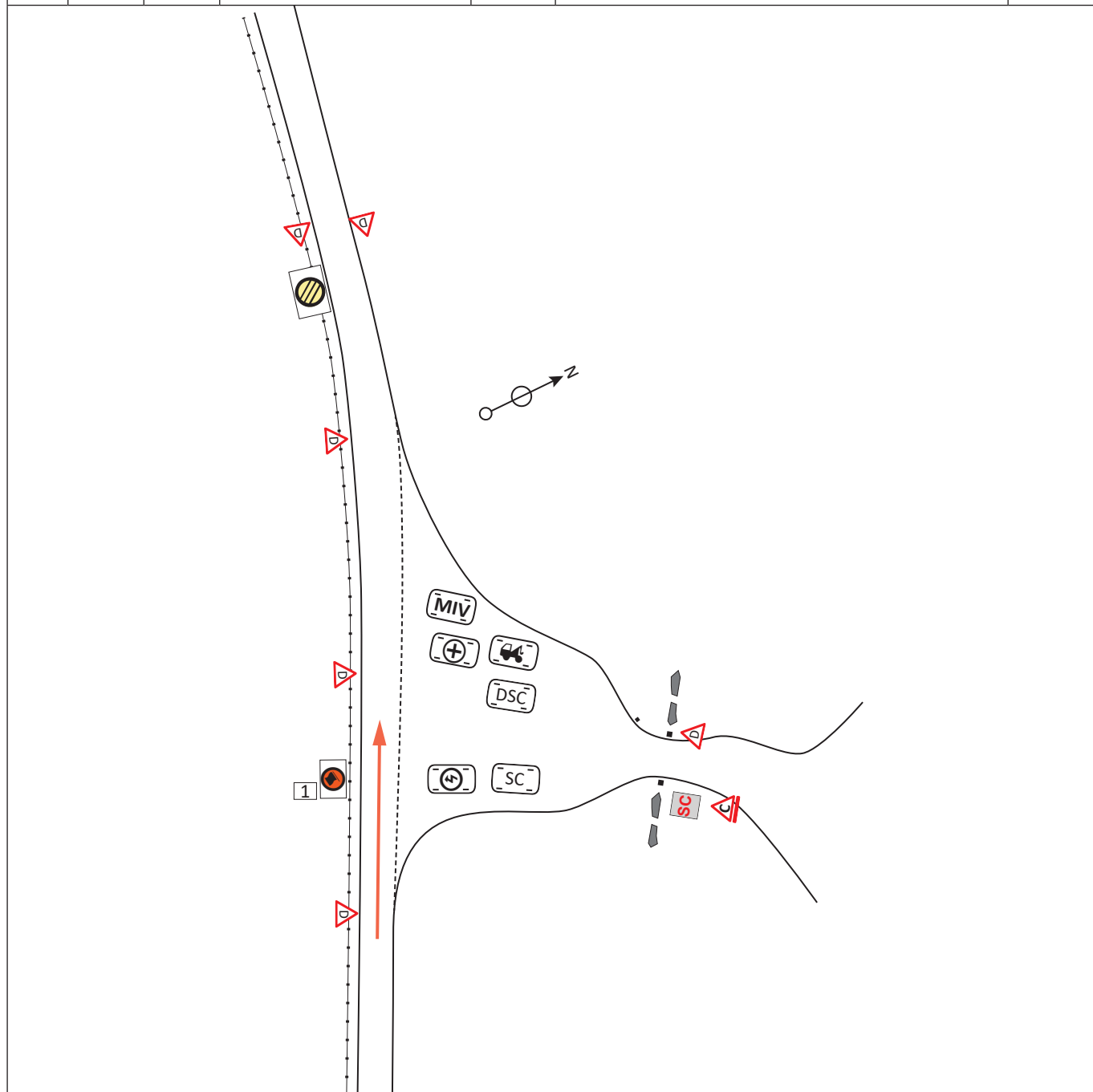


© Crown Copyright and database rights 2019 OS 100034184

Version 8 - Added helicopter landing point H19, removed helicopter landing H3

©2024 Rali Ceredigion

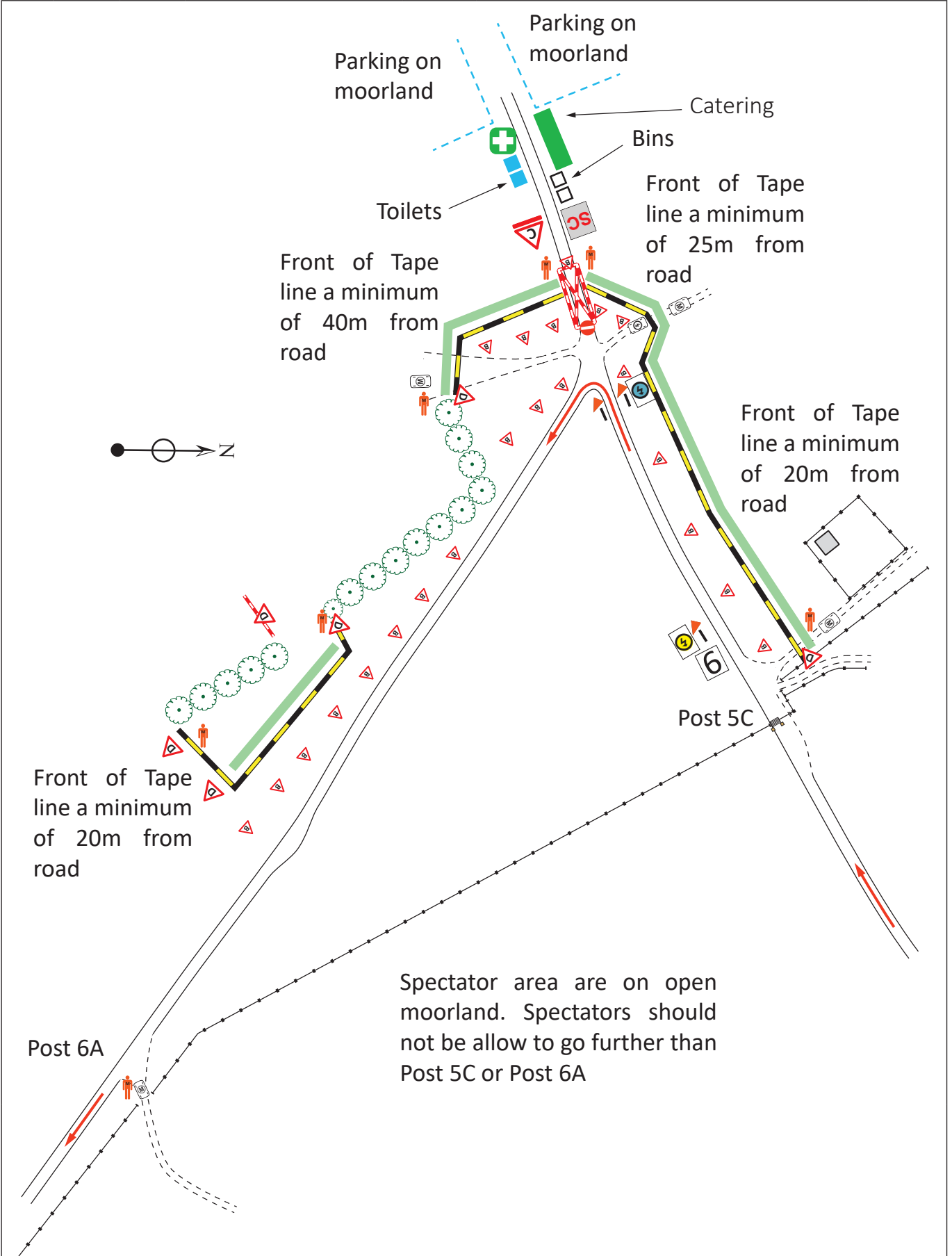
Post No.	Km / Miles		Direction	Safety & Radio	Information	Predicted Marshals
	Total	Inter				
TC	--	--			TC 3 & 8 52°02.470'N, 4°06.066'W ///lamp.circulate.landlords Notice D, Notice C & Safety Code	1M 2TK
1	--	--			Start SS 9 & 12 52°02.318'N, 4°06.183'W ///harnessed.sued.reform	--



Post No.	Km / Miles		Direction	Safety & Radio	Information	Predicted Marshals
	Total	Inter				
1	0.00 0.00	0.00 0.00			Start SS 9 & 12 Notice C & Safety Code	1M 2TK
2	0.62 0.39	0.62 0.39				1M 1SEC
3	0.76 0.47	0.14 0.09				1
3A	1.02 0.63	0.26 0.16			Footpath NRW Car Park / Cycle Trail Notice C & Safety Code	2
3B	1.40 0.87	0.38 0.24			House on right Gorsgoch	1
3C	1.63 1.01	0.23 0.14			Footpath (Not Visible)	0
4	1.93 1.20	0.30 0.19			Direction Chevron	1
4A	2.45 1.52	0.52 0.32				0

Post No.	Km / Miles		Direction	Safety & Radio	Information	Predicted Marshals
	Total	Inter				
4B	2.67 1.66	0.22 0.14				0
5	2.96 1.84	0.29 0.18		Ⓢ	1 Small bale to protect sign on exit of junction	3M 1SEC 1RM
5A	3.09 1.92	0.13 0.08			Forest track on right	0
5B	3.48 2.16	0.39 0.24			Forest track on right Repeater location	0
5C	3.85 2.39	0.37 0.23			2 Big bales to protect gate posts	2
6	4.00 2.49	0.15 0.09		⚡	Fan Zone Footpath on track to right Notice C & Safety Code	6M 1RF
6A	4.33 2.69	0.33 0.21			Marshals parking on left Fan zone limit on right	2
7	5.33 3.31	1.00 0.62				2

Post No.	Miles		Direction	Safety & Radio	Information	Predicted Marshals
	Total	Inter				




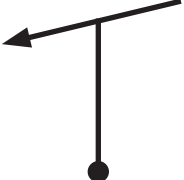

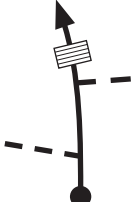
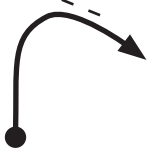





Post No.	Km / Miles		Direction	Safety & Radio	Information	Predicted Marshals
	Total	Inter				
7A	5.57 3.46	0.24 0.15			House on left Blaengdrlech Fach	0
7B	5.75 3.57	0.18 0.11			1 Big bale to protect telegraph pole	0
8	5.84 3.63	0.09 0.06		Ⓒ	4 Big bales for the chicane 1st Bale 30 mtrs after pole on left 1 Big bale to protect metal post on right Footpath Notice C & Safety Code	3 1RM
8A	5.93 3.68	0.09 0.06			2 Small bales to protect gate posts Footpath Notice C & Safety Code	0
9	6.14 3.82	0.30 0.19		 	Bend after Crest Direction chevron	0
9A	6.17 3.83	0.03 0.02			LLIDIAD NENNOG	0
9B	6.27 3.90	0.10 0.06			7 Big bales to protect walls, post box, phone box	3
10	6.33 3.93	0.06 0.04			1 Big bale to protect bridge on left and side	1M 1RF

Post No.	Km / Miles		Direction	Safety & Radio	Information	Predicted Marshals
	Total	Inter				
10A	7.05 4.38	0.72 0.45			Track to Nantllwyd	1
10B	7.68 4.77	0.63 0.39		Ⓒ	Track to Brithdir / Nantyperchyll Footpath on track Notice C & Safety Code	1RM
10C	7.81 4.85	0.13 0.08			House on right Deri Cottage	1
10D	8.56 5.32	0.75 0.47			Forest track on right 4 Big square bales. High line of tape	0
11	9.09 5.65	0.53 0.33		⚡ +	3 Big bales to protect gate posts and D rail fence Bridleway on track to left Notice C & Safety Code	1M 1RF
11A	9.17 5.70	0.08 0.05			Church & church hall on left 2 Big square bales to protect church hall	0
11B	9.50 5.90	0.33 0.21			House on left Track on left to Pan y Betws Footpath on track to the right Notice C & Safety Code 1 Big bale to protect Post Box	1
11C	9.72 6.04	0.22 0.14			Houses on right Ysgubor Isaf	1

Post No.	Km / Miles		Direction	Safety & Radio	Information	Predicted Marshals
	Total	Inter				
11D	9.93 6.17	0.21 0.13			1 small bale to protect telegraph pole after left corner 1 big bale to protect right side gate post Gates must be secured open for rally	0
11E	10.72 6.66	0.79 0.49			Farm 1 Big Bale to protect wall on right 2 Big bales to protect walls on left Small bale to protect pole on right opposite house. Footpath on right, Notice C & Safety Code. Must marshal	2
11F	11.23 6.98	0.51 0.32		(C)	2 Big bales to protect milk stand on left just before track Must marshal	2
12	11.47 7.13	0.24 0.15		(⚡)	3 Big bales to tighten junction	3M 1RF
12A	11.66 7.25	0.19 0.12			2 Small bales & 2 big bale to protect poles on left	0
12B	11.72 7.28	0.06 0.04		(C)	4 Big square bales to protect tree and define bend	1
12C	11.77 7.31	0.05 0.03			House on left Morfa	0
12D	11.95 7.43	0.18 0.11			Gwernogle Village Houses on left and right Protect London House and bridge with 3 big bales	1




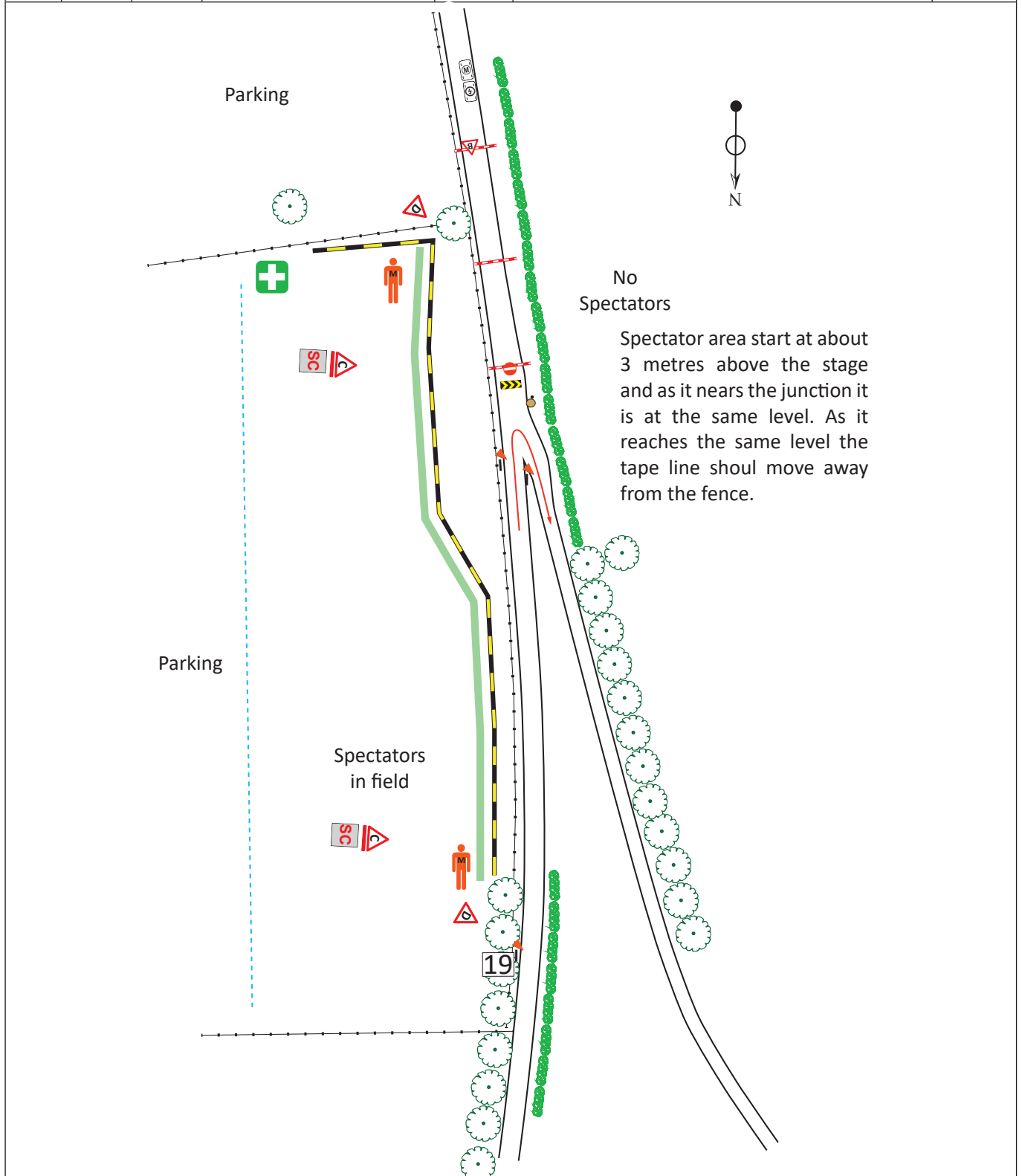
Post No.	Km / Miles		Direction	Safety & Radio	Information	Predicted Marshals
	Total	Inter				
13	12.11 7.52	0.16 0.10				2
13A	12.20 7.58	0.09 0.06			House on left & right Protect bridge with bales Footpath on right Notice C & Safety Code	1
14	12.30 7.64	0.10 0.06			Secure wheely bins on right	1
15	12.40 7.71	0.10 0.06			1 Big bale to protect tree	1
15A	12.75 7.92	0.35 0.22			House on left, farm buildings on left & right Footpath on right Notice C & Safety Code	1
15B	13.16 8.18	0.41 0.25		Ⓒ	Forest track on right 4x4 Parking only, must marshal Remove or protect with bale first chevron sign on left. Cover second chevron sign	1M 1RM
15C	13.68 8.50	0.52 0.32			Cover chevron signs	0
15D	14.16 8.80	0.48 0.30			Track on left to Tirlan	1

Post No.	Km / Miles		Direction	Safety & Radio	Information	Predicted Marshals
	Total	Inter				
15E	14.29 8.88	0.13 0.08			2 Big bales to protect grid Fan Zone on right to Post 16 Marshal parking on right or left	2
16	14.59 9.07	0.30 0.19			Fan Zone	3M 1RF
16A	14.93 9.28	0.34 0.21			2 Big bales to protect grid Track on left to Hafod Footpath on right Notice C & Safety Code	1
16B	15.54 9.66	0.61 0.38			Highlight hedge on outside of tightening right hand bend 1 Big bale on outside of bend at gate	0
16C	15.76 9.79	0.22 0.14			1 Big Bale to protect trees on left Track on left to ruins Footpath on left. Notice C & Safety Code Must marshal	2M 1RM
16D	16.22 10.08	0.46 0.29			Farm on left Cae'r Blaidd Bale on left at end of hedge	1
16E	16.61 10.32	0.39 0.24			Track on left Bridleway Notice C & Safety Code	0
16F	17.05 10.59	0.44 0.27			Forest track on right	1

Post No.	Miles		Direction	Safety & Radio	Information	Predicted Marshals
	Total	Inter				

Post No.	Km / Miles		Direction	Safety & Radio	Information	Predicted Marshals
	Total	Inter				
16G	17.28 10.74	0.23 0.14		Ⓢ	Track on left to houses Gwarallt Must marshal	1
17	17.57 10.92	0.29 0.18			1 Big bale to protect pole on outside of left hand bend Forest Car Park on left Footpath Notice C & Safety Code	1
17A	17.69 10.99	0.12 0.07			4 Big square bales on outside of bend to protect pole and drop	0
17B	17.87 11.10	0.18 0.11			8 Big square bales on outside of bend to protect pole and drop	0
18	18.10 11.25	0.23 0.14		⚡	Forest car park on right Wrap fence on right on the approach to the bend Bridleway on left Notice C & Safety Code	2M 1RF
18A	18.72 11.63	0.62 0.39			House on left, buildings on the left Brynmarlais Footpath on right Notice C & Safety Code 1 Big bale to protect pole on right before tin shed	1
18B	18.83 11.70	0.11 0.07			Road to house on left Taicyd	1
18C	19.36 12.03	0.53 0.33			1 Big bale to protect pole on right	0

Post No.	Km / Miles		Direction	Safety & Radio	Information	Predicted Marshals
	Total	Inter				
19	19.55	0.19		Ⓒ	1 Big bale to protect pole on right Fan Zone in field on left above stage 1 Small bale to protect concrete water supply pipe marker on left	4M 1RM
	12.15	0.12				



Post No.	Km / Miles		Direction	Safety & Radio	Information	Predicted Marshals
	Total	Inter				
20	19.75 12.27	0.20 0.12			Flying Finish 51°57.472'N, 4°09.410'W ///resold.corkscrew.straddled	2TK
--	--	--			300 metres from Flying Finish 200 metres 100 metres	--
20A	19.80 12.30	0.05 0.03			2 Big bales to protect bridge	0
20B	19.91 12.37	0.11 0.07			Houses on left & right Footpath on right Notice C & Safety Code	1
21	20.07 12.47	0.16 0.10			Stop Line 51°57.472'N, 4°09.568'W ///painters.bitters.initiates	2M 2TK